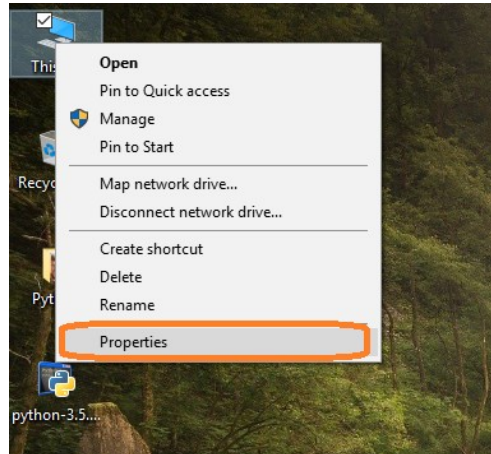


# Python Path

In this topic we discuss on how to set python path like java programming language is required to set path and after execute java program same as python programming is required to setup path the following all the step to set path on windows system.

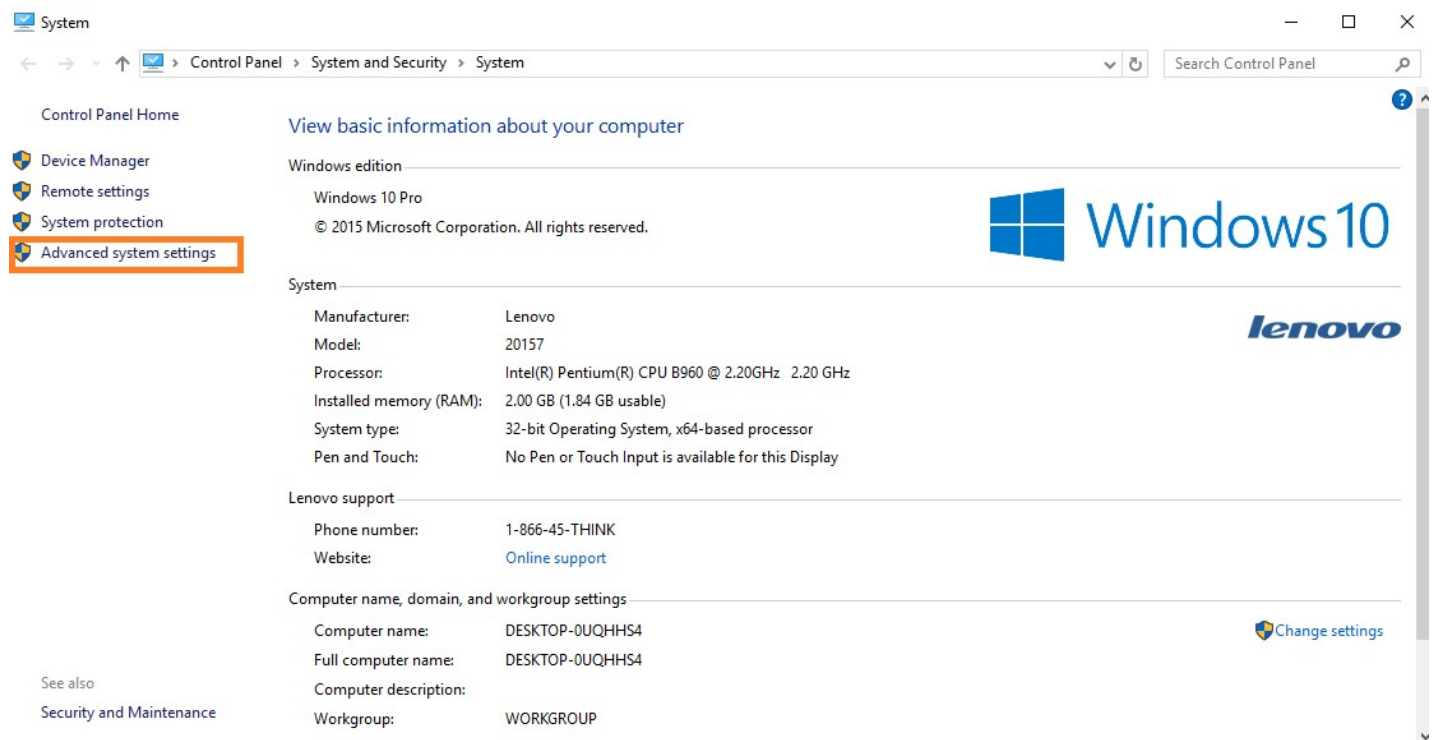
## Step 1:

Right click on thispc icon and click on Properties.



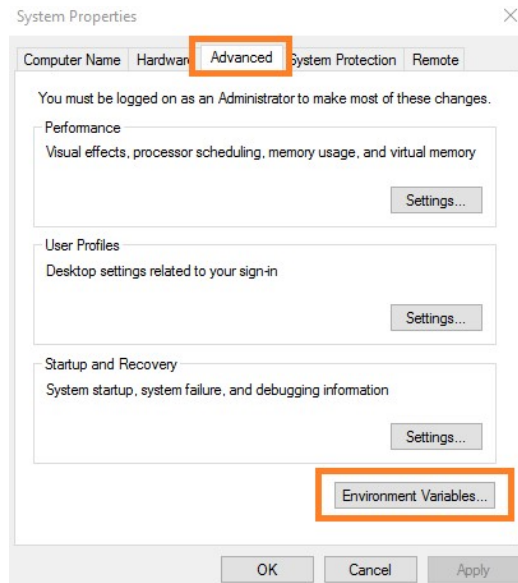
## Step 2:

After click on Properties open new window like following image in this windows select advance system setting and click it.



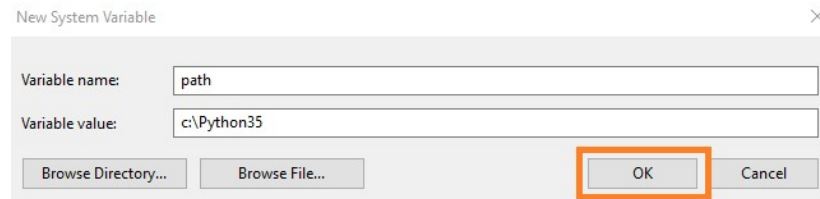
## Step 3:

After click on advance system setting opne a new windows name system properties in this windows goto Advance tab and click on Environment Variables.



#### Step 4:

After click Environment Variables open new window like step 5 click New.. button in system variable.than open new windows like following image.



Write variable name path and variable value like C:\Python35.

#### Step 5:

Step 5 is final step of setup path after fill all required information and click on ok button.

